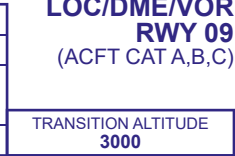
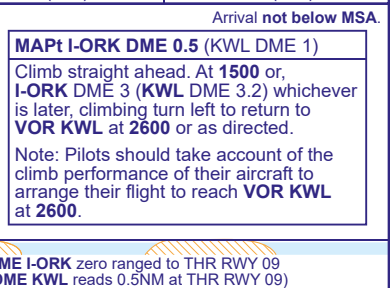


RWT 09
(ACFT CAT A,B,C)



RECOMMENDED PROFILE Gradient 6.1%, 370FT/NM

DME I-ORK(KWL)	5(5.5)	4(4.5)	3(3.5) (SDF)	2(2.5)	1(1.5)
ALT(HGT)	1920(1881)	1560(1521)	1190(1151)	820(781)	460(421)



Aircraft Category		A	B	C	Rate of descent	G/S KT	160	140	120	100	80
OCA (OCH)	Procedure	540(501)	540(501)	540(501)		FT/MIN	990	860	740	620	500
VM(C)OCA (OCH AAL)	Total Area	650(592)	660(602)	1250(1192)							
	South of RWY 09/27	650(592)	660(602)	760(702)							

[illegible]

Arrival **not below MSA**. Overhead VORDME KWL (IAF) at **2600** turn to establish on the outbound leg of the holding pattern. Extend the outbound leg of the hold descending to **2400**. At I-ORK DME 8.5 (KWL DME 9) (CAT A,B) or I-ORK DME 9.5 (KWL DME 10) (CAT C) turn right to establish on the localizer; when established continue as for basic procedure.

ENTRY TO BASE TURN PROCEDURE AFTER HOLDING

If required, the Base Turn procedure may be entered after holding by flying a teardrop reversal manoeuvre from overhead the holding facility after flying inbound in the hold as follows: Fly outbound on track 103°M (CAT A,B) or 122°M (CAT C) for 1 MIN then turn left to return to the overhead to enter the base turn procedure. Lowest altitude to commence procedure from the hold is **2600**.

NOTE 1 NDB KW may be used in lieu of VOR KWL.

CHANGE (8/21): I-ORK DME ELEVATION. MAG VAR. MAG TRACKS. OBSTACLES.